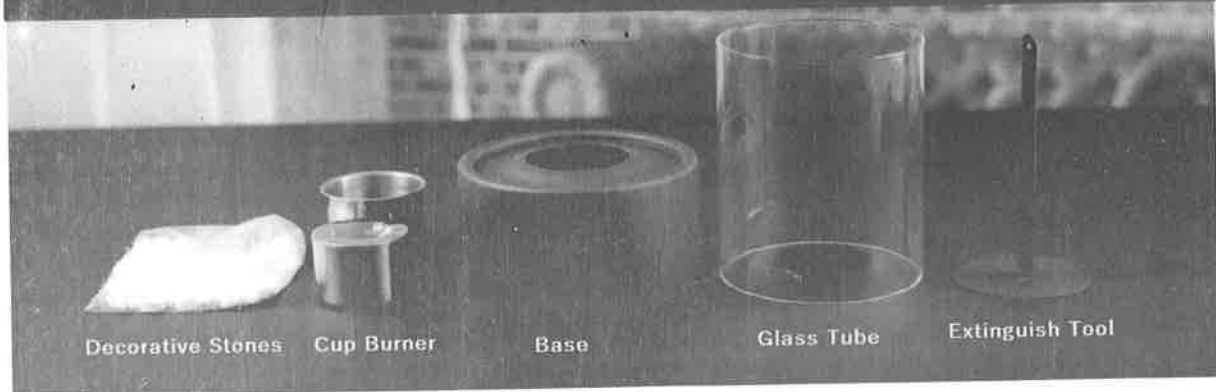


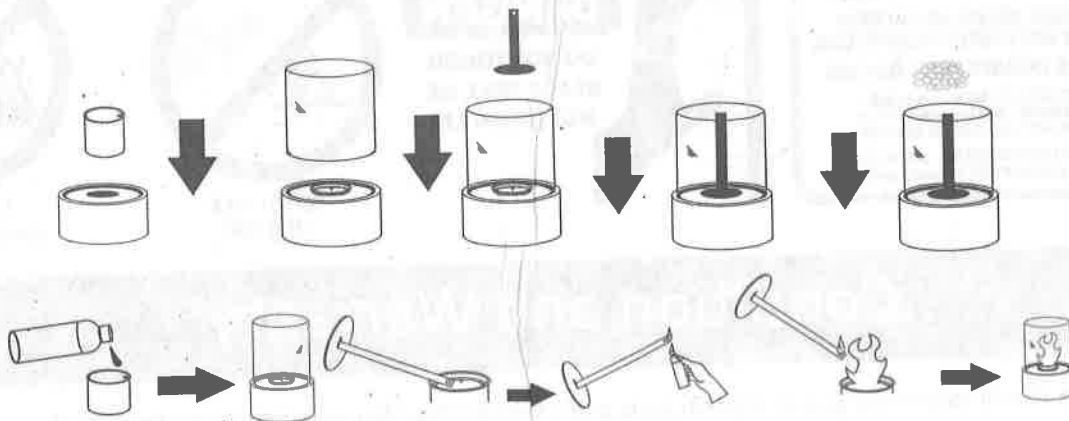
Instruction Manual



PARTS AND ACCESSORIES



Assembly and lighting



User Safety Guide

Read and Understand the entire User's Manual and Safety Guide prior to use.

Please store these safety warnings in a safe place for future reference. Failure to follow these instructions could result in property damage, bodily injury or even death.

NOTICE: BUYER ASSUMES ALL RESPONSIBILITY FOR SAFETY AND USE THAT IS NOT IN ACCORDANCE WITH INSTRUCTIONS AND WARNINGS.

Fuel:

Read Fuel bottle label before use. Use only approved ethanol fuel. We recommend only using "Regal Flame ethanol fireplace fuel." **USE EXTREME CAUTION! - DANGER FLAMMABLE/IRRITANT** Ethanol Fireplace Fuel is a Class 3 flammable liquid and presents real danger when not used in direct compliance with all Instructions and safety warnings. **KEEP FUEL OUT OF REACH OF CHILDREN AND PETS.** Never allow children to handle fuel, fireplace or fire accessories.

Emergency First Aid Measures

Eyes: Immediately flush affected area with plenty of cool water. Eyes should be flushed for at least 15 minutes. Remove and wash contaminated clothing before reuse. GET MEDICAL ATTENTION IMMEDIATELY.

Swallowing: If patient is fully conscious and able to swallow, have victim drink water or milk to dilute. Never give anything by mouth if victim is unconscious or having convulsions. CALL A PHYSICIAN OR POISON CONTROL CENTER IMMEDIATELY. Induce vomiting only if advised by physician or Poison Control Center.

Skin: Wash skin with soap and water for at least 15 minutes.

Inhalation: Remove victim to fresh air. If victim has stopped breathing give artificial respiration preferably mouth to-mouth. GET MEDICAL ATTENTION IMMEDIATELY.

Handling and Storage

Flammable Material: Keep away (at least 2 meters) from heat, sparks, and open flame and ignition sources. Do not store Ethanol Fuel in direct sunlight or allow fuel to become heated; always keep it in a dry cool area.

Note: If fuel is stored in a cold area, it will be difficult to light. Place fuel in room temperature.

WARNINGS!

Never leave a burning or hot fireplace unattended.

Keep away from children and pets. This is not intended for children.

Do not operate in a room with oxygen tanks in use or if flammable vapors are present.

Do not use if anyone in the house or room has respiratory conditions

Do not burn in a confined space, the flame consumes oxygen

Never open a fuel bottle near an open flame (at least 2 meters). A dangerous fire flash could result.

Never attempt to move the fireplace while it is burning or is still hot.

After filling your fireplace, be sure to replace the bottle cap and remove the bottle from area of the fireplace before lighting the fireplace.

Glass will be hot when lit and for some time after extinguishing, do not touch glass surface. Due to high surface temperatures keep children, pets, clothing, drapery and furniture away from the unit.



DANGER

**DO NOT TOUCH
GLASS WILL BE
HOT WHEN LIT**



**DO NOT POUR
INTO FIRE**



**DO NOT POUR
ONTO HOT SURFACES**

Condition and Warranty

- Our fireplaces are guaranteed on parts and workmanship. Warranty begins on the date of purchase. Items that are deemed (Un-fixable) will be replaced with same or similar model in case of discontinuation.
- Warranty will be applied on presentation of a dated receipt and is strictly limited to factory service repair of the piece or pieces that are found to be defective.
- Installations costs will not be reimbursed in any case as damages for any reason whatsoever.
- Customers are responsible for all Freight costs to and from Distributor.
- The distributor will not be held responsible for any incidental or consequential defects, on goods or individuals.
- The warranty will not be applied if devices have been subjected to abnormal use or if used under other conditions of use than the ones they were intended for.
The warranty will not apply in case of deterioration or accident due to negligence, damages caused by failing to
 - maintain and service the device or resulting from an alteration of material.